

Customer :

customer

Customer part :

customer part

Comment :

Comment

S1=4.52

S2=5.78

Tmax=466

Tp S2=505.0

PI=0.44

HI=97

Sample =1720.80

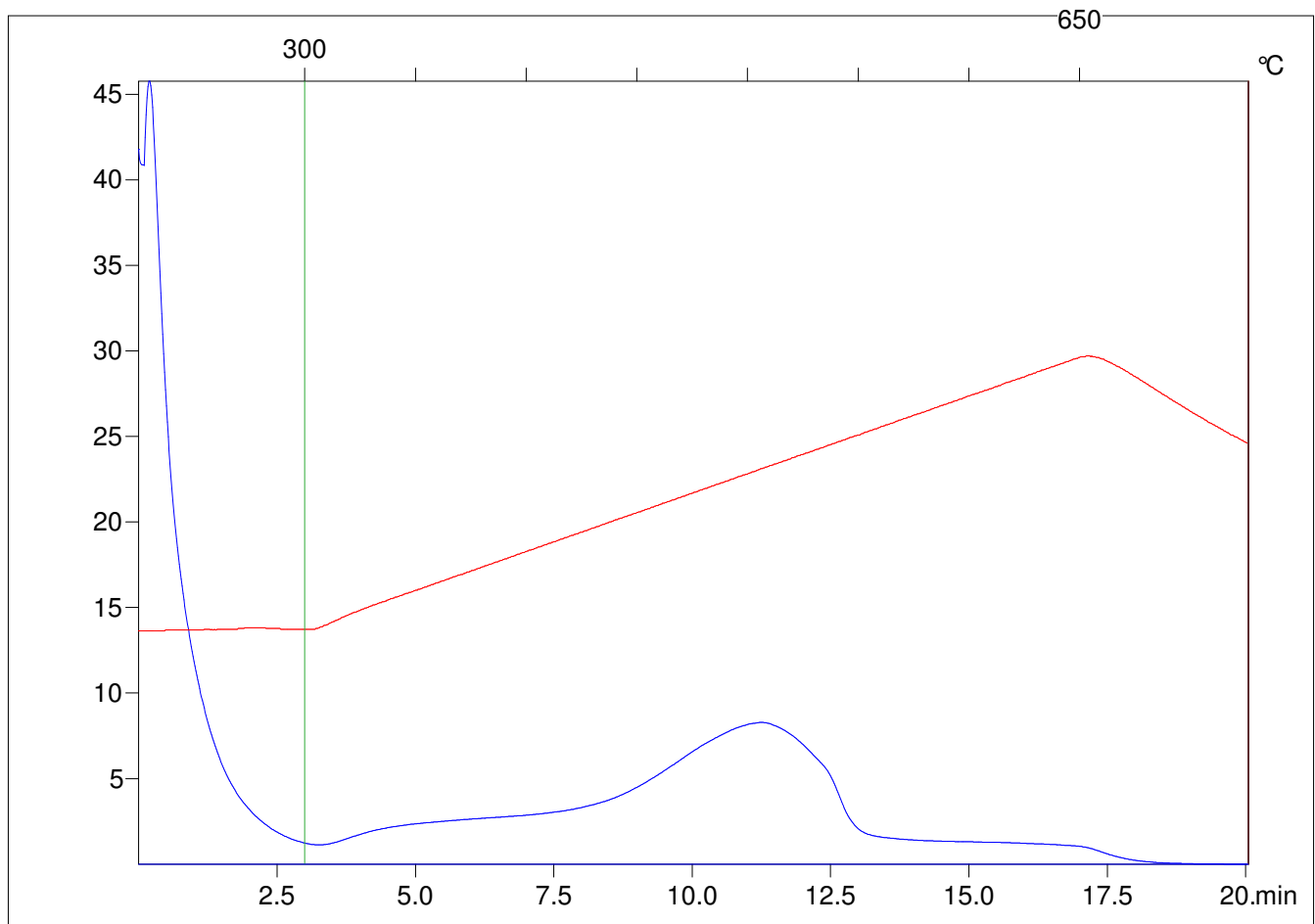
Method =Bulk Rock

Cycle=Basic

KFID(10*9)=1444

Qty =70.7

TOC=5.93



C:\VINC\PK2_1792\PK029.R00 : FID pyrolysis graphic

State

Pyro Status

Oxi Status